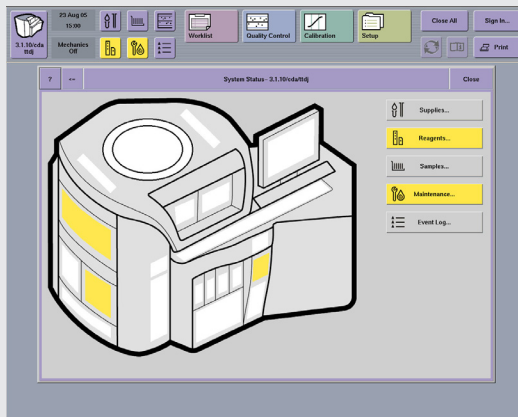


Case Study

Centaur XP ID-UX Collaboration



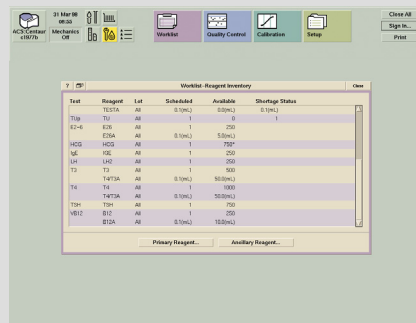
Ron Cianfaglione
Senior User Interface Designer

Customer Touch Points

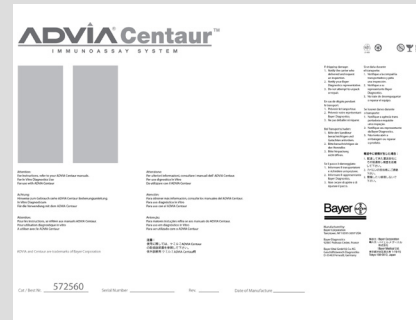
Product Marking



User Interface



Labeling/Packaging



Challenge

The industrial and interaction design teams were asked to update the highly successful Centaur diagnostic instrument. While each team focused on separate functionality, we collaborated to achieve a unified customer experience.

We focused our three key touch points which overlapped industrial and interaction disciplines. This collaborative approach ensured new features would align to a consistent and user-friendly solution, making it simpler and easy for all users to interact with the system.

Requirements

Review and update all product branding.

Create consistent labeling system across customer touch points.

Update system to include touch-screen friendly experience

Product Marking

The goal of the updated product marking is to indicate which areas of the instrument the user can interact with the system. The industrial design and interaction designers met regularly to review work in-process, align approaches and provide feedback throughout the development process.

Collaboration Highlights

1. **Status Dome** - notification colors align with user interface messaging system
2. **Retractable Monitor Arm** - supports multiple user heights, and touch screen interaction
3. **Labeling** - established user-centered marking, e.g. Door actuator embedded graphic

Existing Product



Updated Product



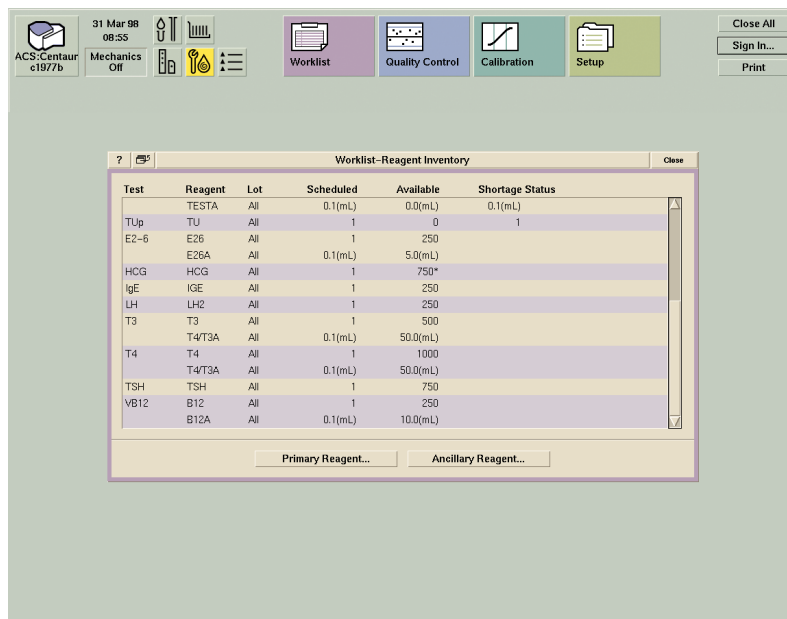
User Interface

The goal of the updated user interface was to provide users with information and access to the system. The industrial design group provided isometric vector models, allowing the instrument graphic to closely reflect the actual instrument. Customers quickly understood what location in the instrument needed attention, as well as the clear difference with the earlier model.

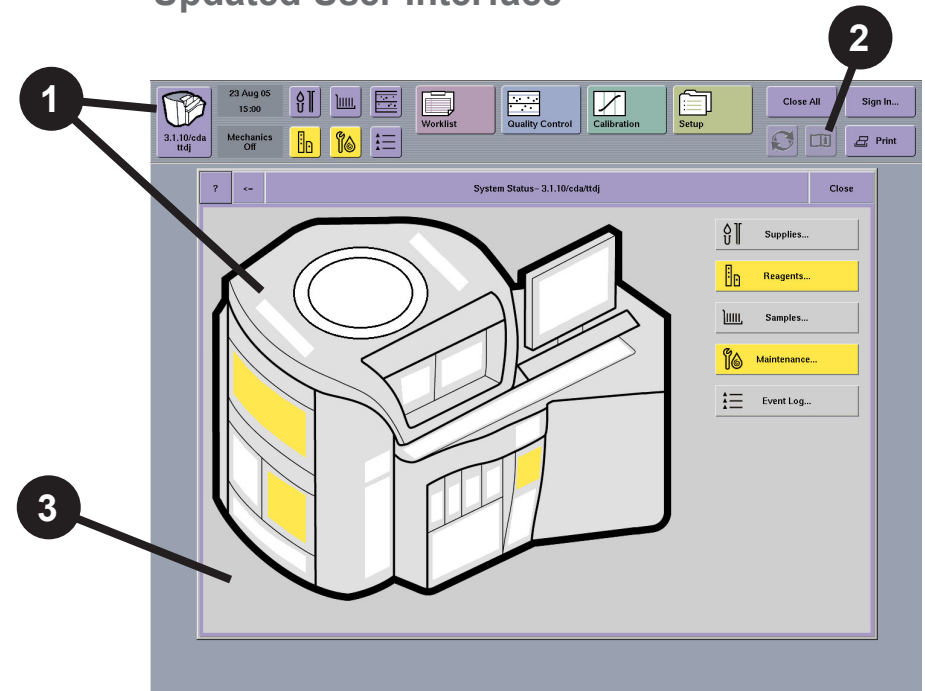
Collaboration Highlights

1. **Instrument Graphic** - graphic aligns with actual instrument
2. **Labeling** - established consistent iconography, e.g. Info Icon
3. **Color Usage** - created unified 'theme' instrument approach

Existing User Interface



Updated User Interface



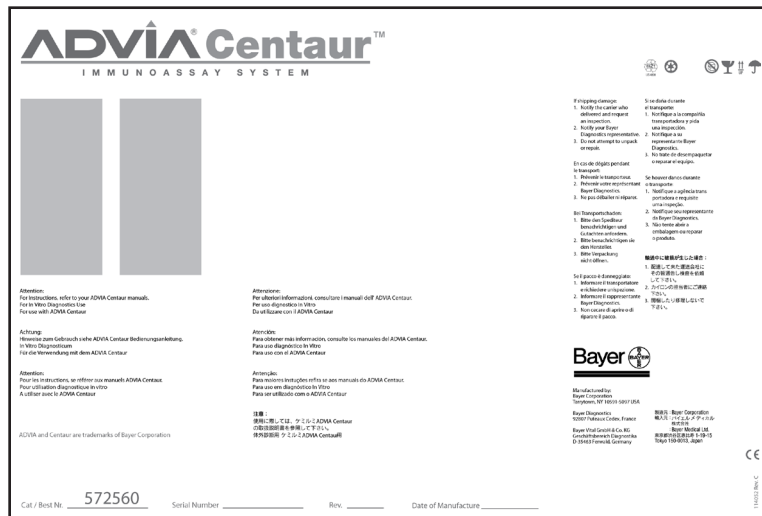
Labeling

The goal of the updated product labeling was to create a repeatable labeling pattern for the required information, aligned with the established icon system. This labeling system allowed for a consistent approach to all portfolio products. The instrument graphic quickly allowed customers to know which package or supplies belonged to which instrument.

Collaboration Highlights

1. **Instrument Graphic** - prominently displayed unique instrument graphic
2. **Consistent Iconography** - common approach throughout all labeling, leveraging established icon system
3. **Consistent Regulatory Approach** - common regulatory approach throughout compliance approval

Existing User Interface



Updated User Interface

